

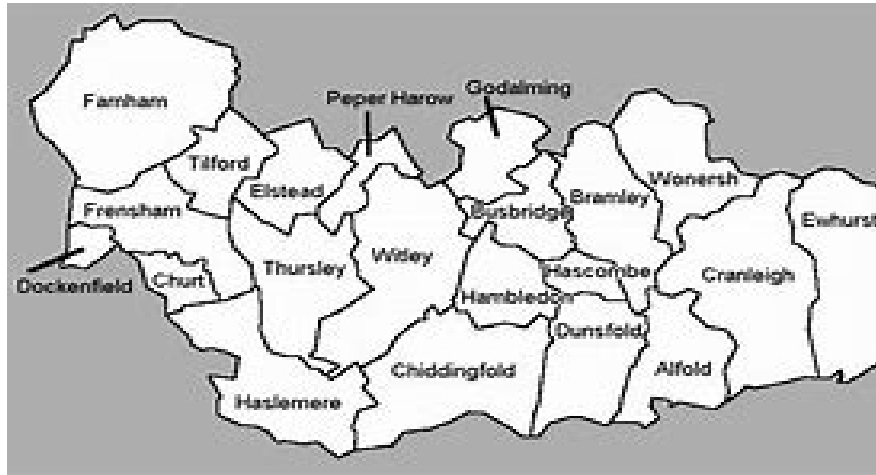
# Overview and Scrutiny Committee Waverley Services

25<sup>th</sup> June 2024

Community Services: Health and  
Wellbeing



# Guildford and Waverley Landscape



Surrey Heartlands ICP  
Frimley ICP

Guildford & Waverley Alliance  
Surrey Heath  
North East Hants & Farnham

# What do we need to do?



## Work alongside local people and communities

- Individuals supported to stay and age well via prevention interventions
- Supported self-management
- Active social prescribing and signposting
- Communities supported to develop third sector volunteer opportunities.



## Establish integrated neighbourhood teams specific to the local population

- Supporting improved continuity and access to preventative healthcare
- Availability of blended generalist and specialist workforce
- Focus on community engagement and outreach
- Proactively identify and target individuals who can benefit from interventions.



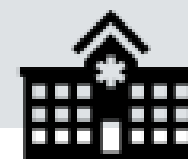
## Create clear development plan to support the sustainability of Primary Care

- Focus on unwarranted variation in access, experience and outcomes
- Ensure understanding of current spending distribution
- Support Primary Care to work with other providers at scale
- Tackle gaps in provision.



## Develop single, system-wide approach to managing integrated Urgent Care

- Guarantee same-day emergency care for patients and a more sustainable model for practices
- Care will be provided using digital and total triage approaches in local care settings where possible and in an acute setting when not.



### Critical Five

- High Risk Care Management
- Safe and Effective Discharge
- Keeping people well
- Redesigning urgent care

### Fuller Stocktake

- Complex and Chronic Management
- Prevention and Inequalities
- Urgent and Emergency Care

### 23/24 Planning

- Reduce Ambulance Handovers
- Self-Referral
- Reduce Bed occupancy
- Increase Day Case rate
- Increase Capacity

Four Neighbourhood Groups across Guildford and Waverley  
that wrap services around our local communities and develop our new models of integration

As agreed by  
Guildford and  
Waverley Alliance  
Board in June 2023

# Focus of our work



**Guildford and Waverley**  
Health and Care Alliance

*“Our Guildford and Waverley population will start well,  
stay and live well, age well and die well “*

Working  
together to  
support  
thriving  
communities



Tackling  
Inequalities in  
outcome,  
experience and  
access



Advancing  
Community  
Services and  
Integration



My Care, My  
Way



Creating the right Environment for Growth and Sustainability



- Co design
- Community led
- Co-Produce
- Capacity

- High Risk Care reviews
- Creating new models of care

- Developing services
- Improving Access

- Population health
- Prevention
- Proactive



# Our Challenges!

## Different Culture of Health

- Language
- People Centred Vs Clinical
- Different systems within health
- Involvement of Frimley ICP

## Resources and Delivery

Funding!!

Sovereignty of Guildford and Waverley

Thriving communities to be community led not health led

# Guildford and Waverley Health and Wellbeing Partnership Board

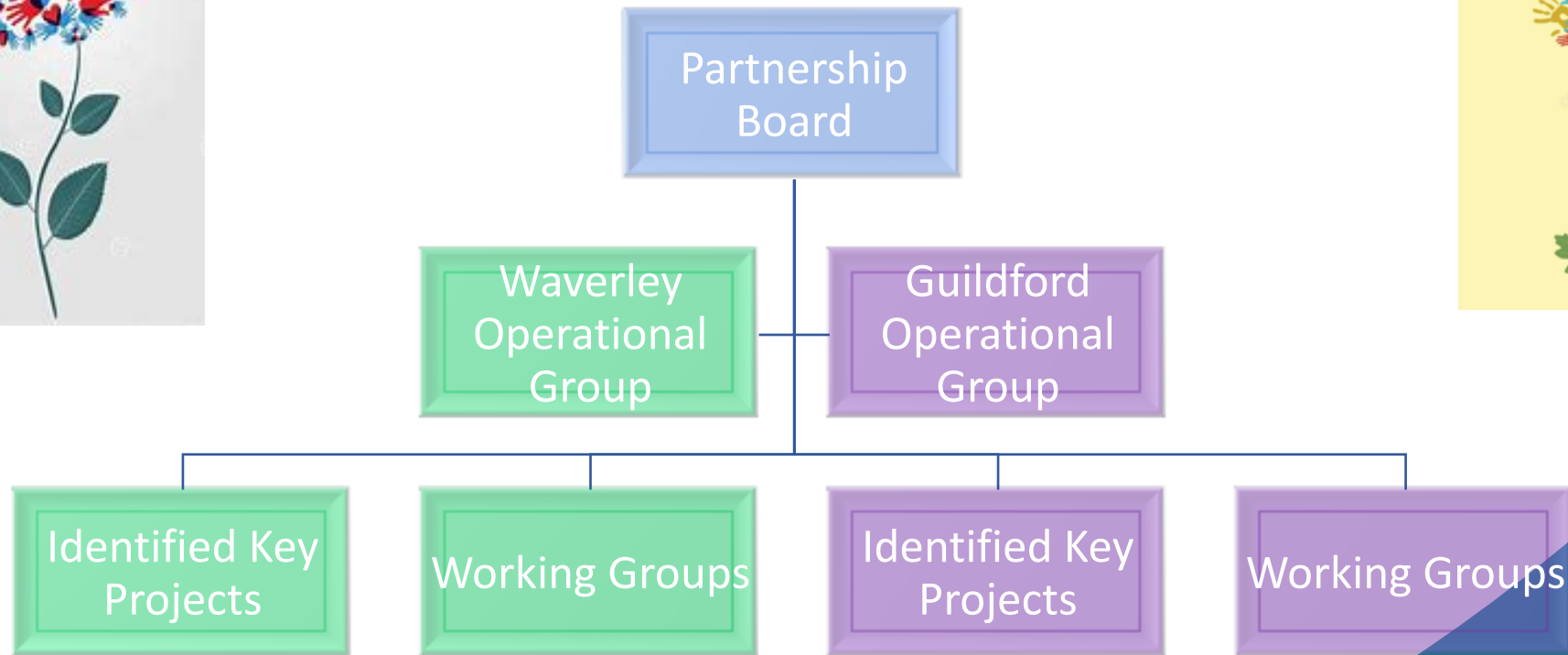


# Purpose of the Partnership



- To help our communities thrive and live well for longer
- To work together to address the wider determinants of health and have a people centred holistic approach to health and wellbeing –focussing on people not patient
- To utilise all our data to ensure key community projects meet the needs of our residents
- To link in all our strategies and objectives in one place
- To ensure continuity across the place-based partnerships

# Proposed Structure of meetings







## Key Partners for Delivery

### Partnership Board (Strategic)

- Local authority Chair (SH)
- Local authority Councillors
- Local authority leads on H/WB
- Chair of RSCH
- G/W Place lead
- NEHF Place lead
- Director of G/W social care
- Surrey Heath Place coordinator
- SCC Public Health and Communities
- VASWS CEO
- Active Surrey
- SW Citizen Advice CEO

### Waverley Operational Group

- Community Services Chair (KW)
- Arts and Culture WBC
- Leisure WBC
- VASWS social prescribers
- Health PCN leads
- Waverley CAB lead
- Partnerships SCC
- Waverley ASC
- Children's Support SCC



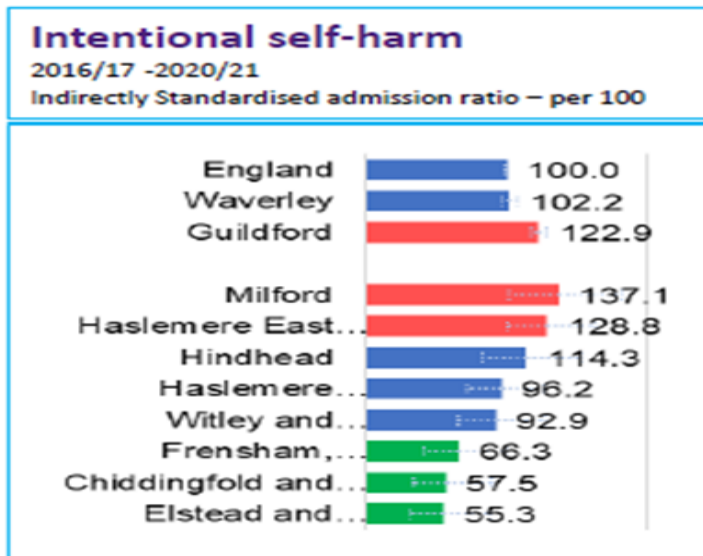


# Why? Self Harm and Loneliness Health Data



## West of Waverley

## East Waverley

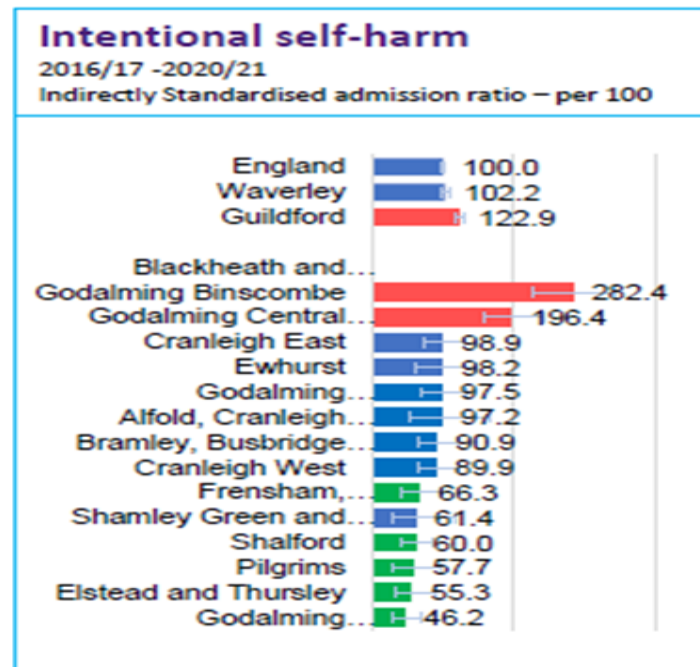


**Key Points:**

Waverley District – similar to England and a better rate ratio than Guildford District.

Milford has a significantly higher rate in comparison to England. 37.1%

Haslemere East and Grayswood has a 28.8% higher rate in comparison to England.



**Key Points:**

Waverley District – similar to England

Godalming Binscombe and Godalming Central and Ockford both have exceptionally higher rates in comparison to England – 182.4% higher and 96.4% higher, respectively.

**Key point**

- A score of 1.5 for West Waverley and 1.7 for East Waverley is a high indication of potential loneliness

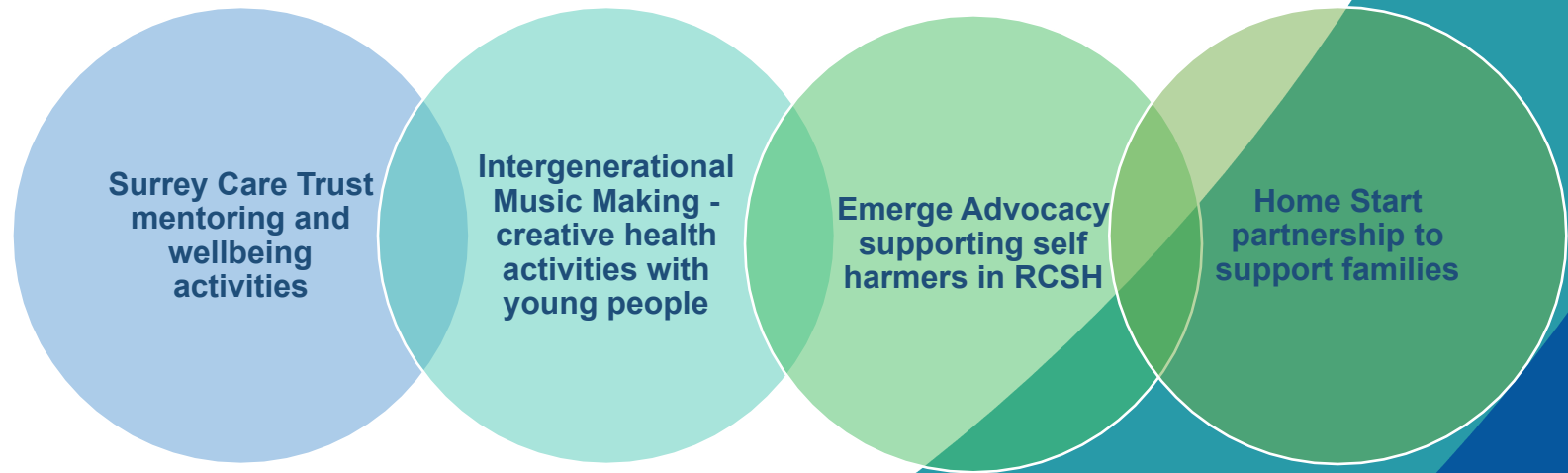
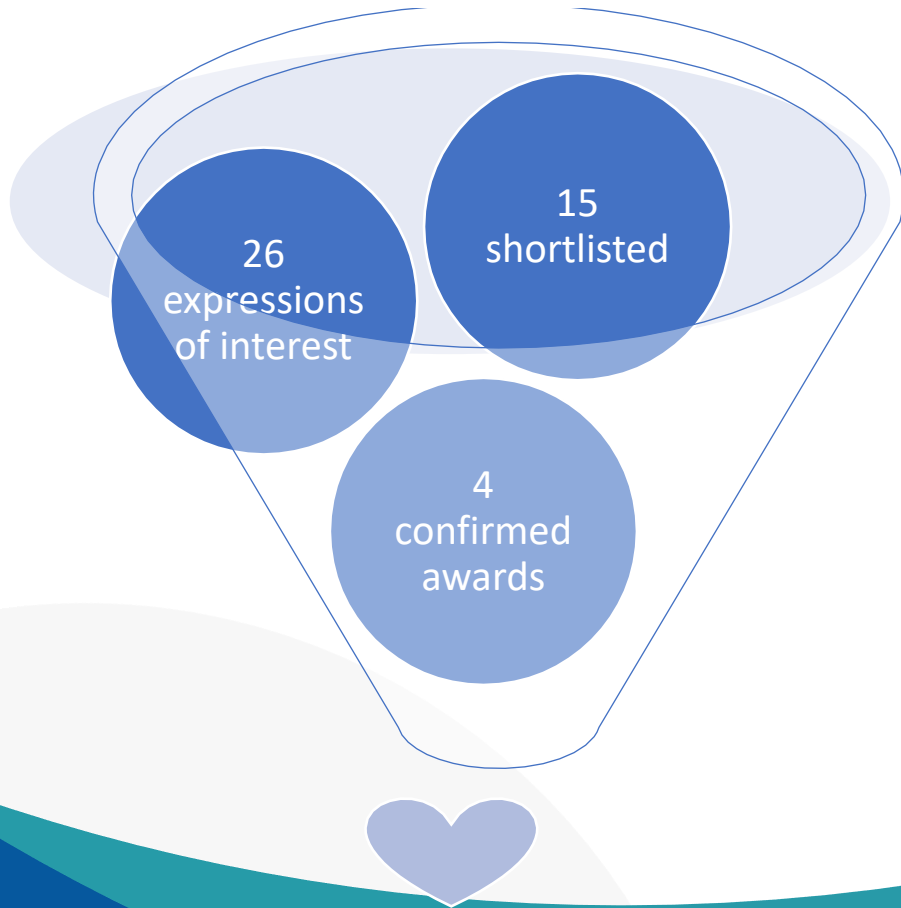
Waverley have established these new mental health support projects as of 1<sup>st</sup> April 2024



Organisation	Funding	Activity/Project
Creative Response	£2,500 (WBC)	To enable 5 care leavers to attend community art for wellbeing sessions at Creative Response
St Polycarps School and Farnham Maltings	£2,000 (WBC)	Collaboration to deliver an arts based project that supports the mental health and wellbeing of students, particularly EBSNA
Thrive Dance Company	£900 (WBC)	Weekly youth dance company sessions in the Summer term for young people experiencing challenging circumstances, are from low socioeconomic backgrounds and struggling with their mental health

# What's Happening

## Mental Health Investment Fund NHS Funding administered at Local Level



# Future Waverley Plan – to include Town and Parish Councils.



Develop creative arts projects

Craft and Cooking family sessions

Increase provision of affordable children's counselling

Establish a social group for older people in Farnham

Expand Active Surrey Project You

Establish a second Andy's Man Club

Promote Volunteering Opportunities

Hold Community Wellbeing Market Places



# What we are bringing into the partnership space already!



<p>Thriving Communities Commissioning Fund</p>	<p>Funding to 23 Amazing organisations Supporting health and wellbeing, loneliness and social isolation</p>
<p>WBC Cultural Projects</p>	<p>4 projects delivered to all ages Supporting mental health through arts and culture</p>
<p>WBC Leisure Projects</p>	<p>7 projects delivered in conjunction with sport and leisure partners Supporting improved physical activity</p>

---

To keep the focus on people not patients

To ensure our corporate priorities are weaved into the whole system of health and wellbeing priorities

Align our future TCCF objectives to whole system success

To build resilience in our partner's ability to deliver projects and overcome challenges as a partnership



what next?

The text 'what next?' is rendered in a playful, multi-colored font. 'what' is in purple, blue, and green, while 'next?' is in red, blue, and purple. A large, orange question mark is positioned to the right of 'next?'. A small orange star is located at the bottom right of the question mark.



## Committee members thoughts, questions and feedback

